

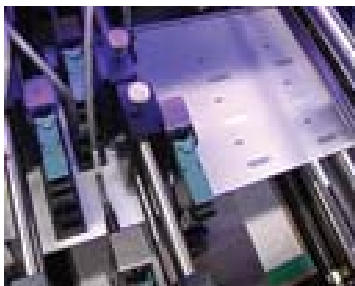


## **IMAGE RECOGNITION AND VERIFICATION SYSTEMS**

The VeriFlex image verification systems provide for image recognition and verification of variable data print jobs, for both human readable numbers and 1D and 2D barcodes. The VeriFlex systems can utilize barcode scanners, area scan cameras, and line scan cameras. The VeriFlex system can be integrated with the JetFlex inkjet printing systems from FPS, and supports Print-Verify, Read-Print, Read-Print-Verify, and Verify-Only capabilities. The VeriFlex system can also be integrated with other non-FPS inkjet printing systems.

### **Applications Include:**

- Numbering
- Barcodes
- Gaming
- Tickets
- Tags
- Labels
- Mission Critical Jobs
- Invisible Inks
- Security Inks



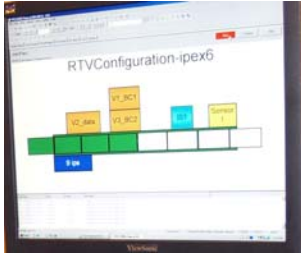
### **Features:**

- Highly flexible configuration allows for Read-Print, Print-Verify, Read-Print-verify and Verify Only capability
- Allows for use of barcode scanners, area-scan cameras, and line scan cameras
- Can be integrated with JetFlex™ inkjet printing systems from FPS and other inkjet printing systems
- Continuous web and cut-sheet applications
- Bad Product Marking capability for web applications
- Divert Gate capability for cut-sheet and card applications
- Log files are generated for verified and non-verified print data
- Error interlocks can stop printing on image verification errors
- Automatically creates re-print files
- Ideal for mission critical applications
- State-of-the-art digital camera and image recognition technology



**Flexible Printing Solutions**

*Providing Integrated VDP Solutions*



## SPECIFICATIONS

Barcode Scanners:	1D barcodes of all types 2D barcodes of all types (speed and dimension limitations, contact PTS for details)
Area Scan Cameras:	Monochrome or Color, 30 Frames/sec (typical) Viewing area = 4" x 4" typical
Line Scan Cameras:	Monochrome or Color 2K, 4K, and 8K Pixels Wide (typical) Line Rates up to 36 kHz, 600 FPM@300 DPI
Line Speed:	600 FPM (183 MPM) maximum (speed limitations exist for certain applications)
Processing Speed:	2 msec per ROI (Region of Interest)
ROIs per Page:	250+ ROIs per page (limited only by computer speed)
Image Types:	Human readable numbers, 1D and 2D barcodes (no pre-print or other background allowed within ROIs)
Computer:	Intel dual quad-core processors (8 cores) 4 GB RAM, 1333 MHz FSB, 250 GB Hard Drive DVD/CD R/W Drive, 2 Ethernet Ports, Windows 7/8 Pro OS
Software:	Image Verification Server, multi-threaded, licensed Inkjet interface module Product Tracking module Product Verification module Product Read Module Software Maintenance Agreement



2070 Weaver Park Drive  
Clearwater, Florida 33765  
PH: +1-727-478-7400 FX: +1-727-478-7002  
Web: [www.flexible-solutions.net](http://www.flexible-solutions.net)  
Email: [sales@flexible-solutions.net](mailto:sales@flexible-solutions.net)

